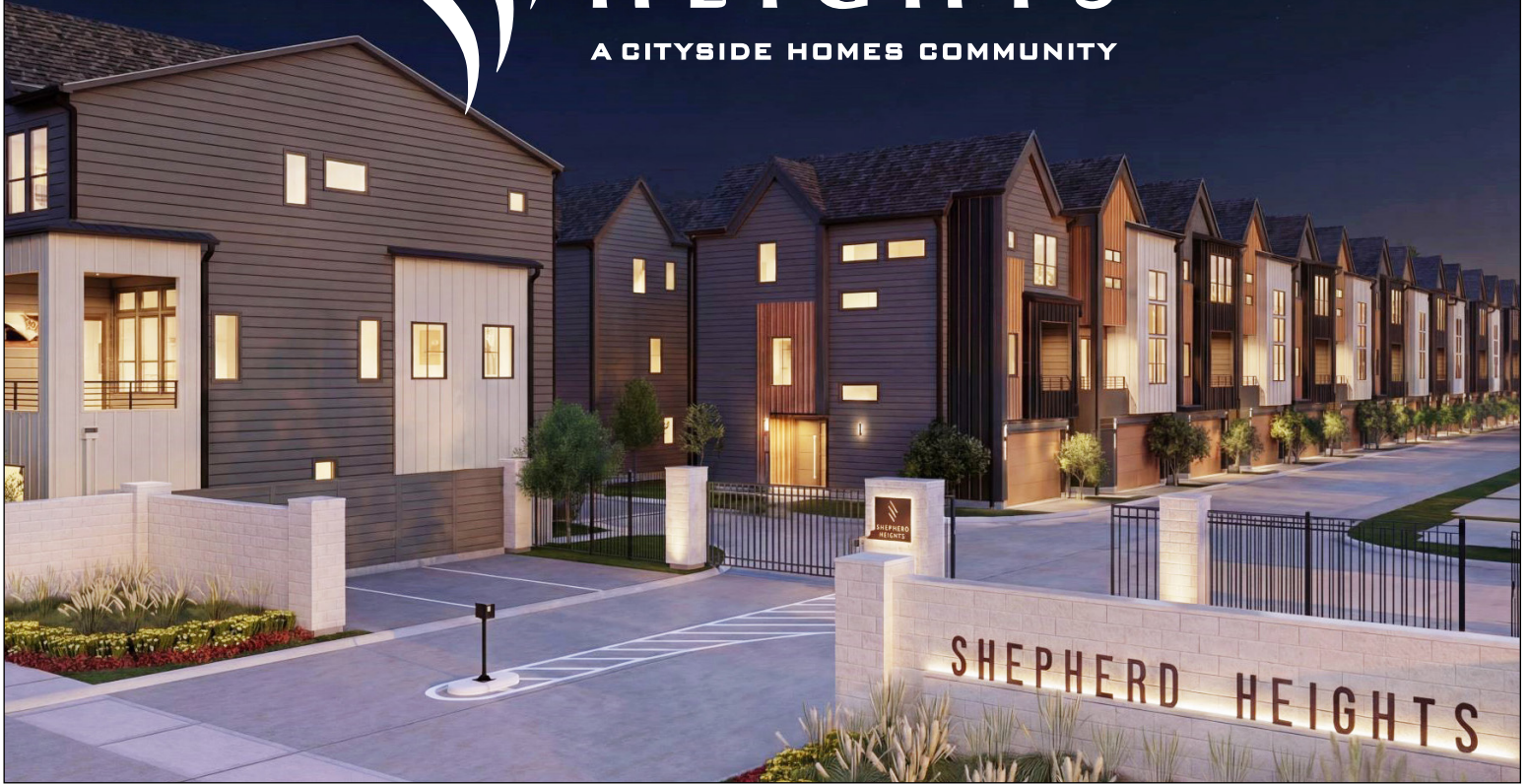




SHEPHERD HEIGHTS

A CITYSIDE HOMES COMMUNITY



\$339,990 - \$459,990

PICKLEBALL COURT

COMMUNITY
POOL AND PAVILION

COMMUNITY DOG PARK

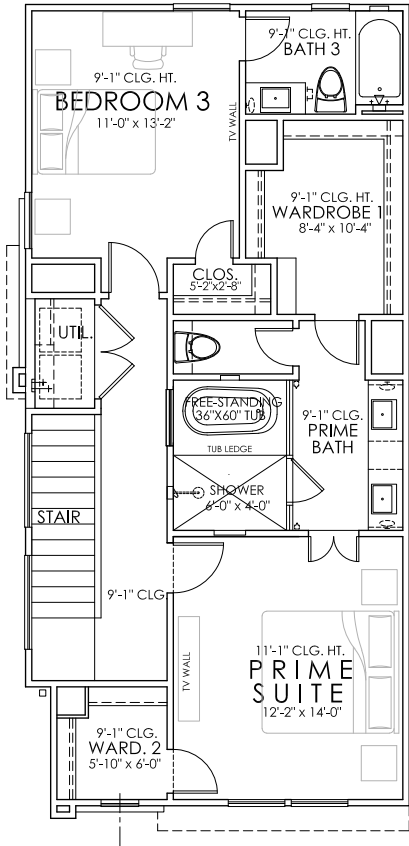
DISCOVER YOUR SPACE™



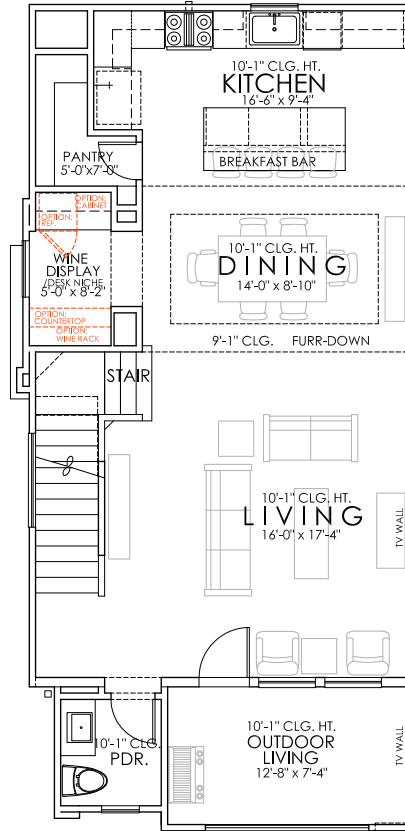
WWW.CITYSIDEHOMES.COM

832-540-7209

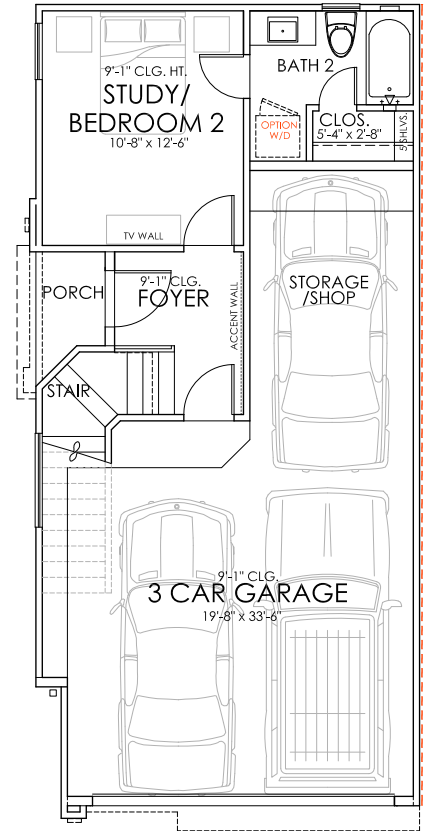




THIRD FLOOR

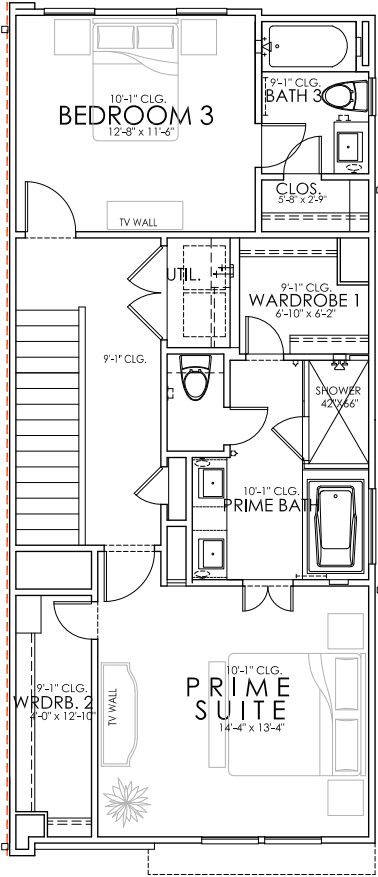


SECOND FLOOR

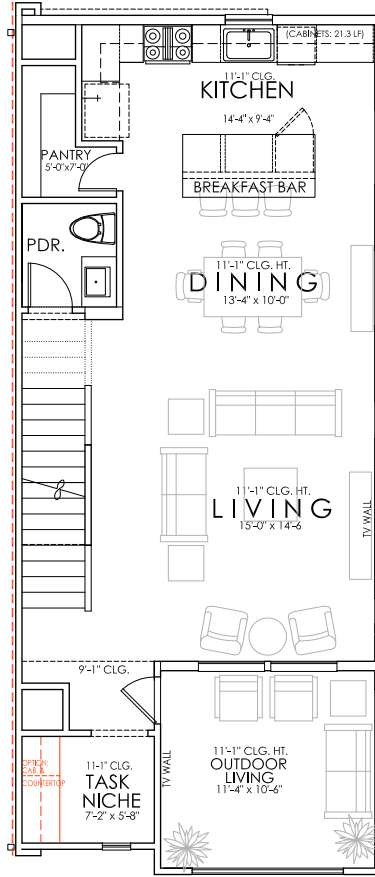


FIRST FLOOR

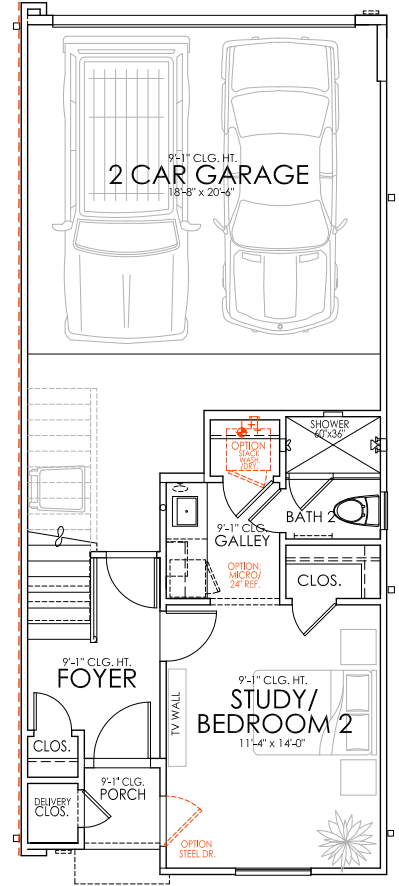
SQUARE FOOTAGES	
FIRST FLOOR:	310
SECOND FLOOR:	779
THIRD FLOOR:	829
CONDITIONED LIVING:	1918 S.F.
OUTDOOR LIVING:	100
TOTAL LIVING:	2018 S.F.



THIRD FLOOR

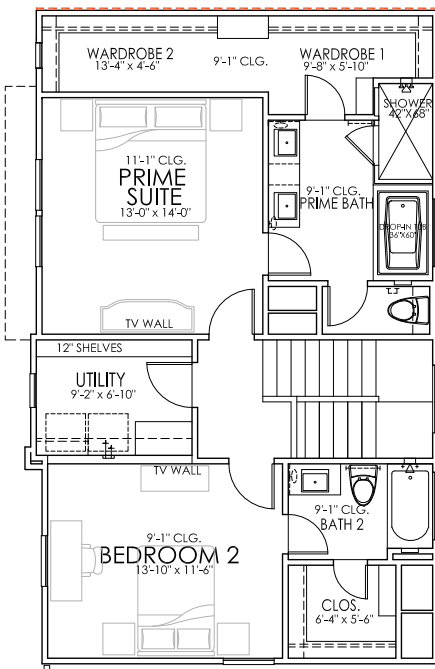


SECOND FLOOR

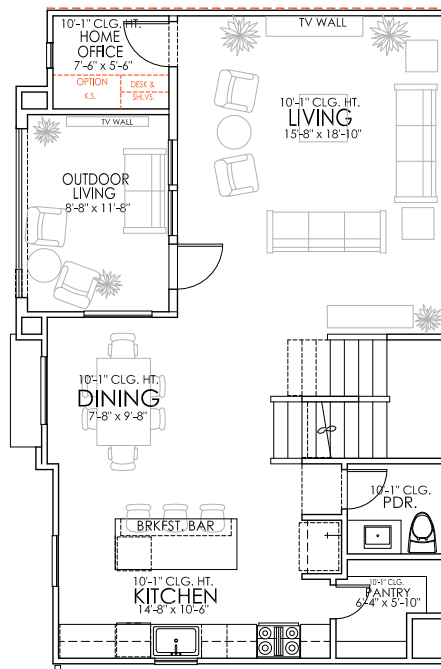


FIRST FLOOR

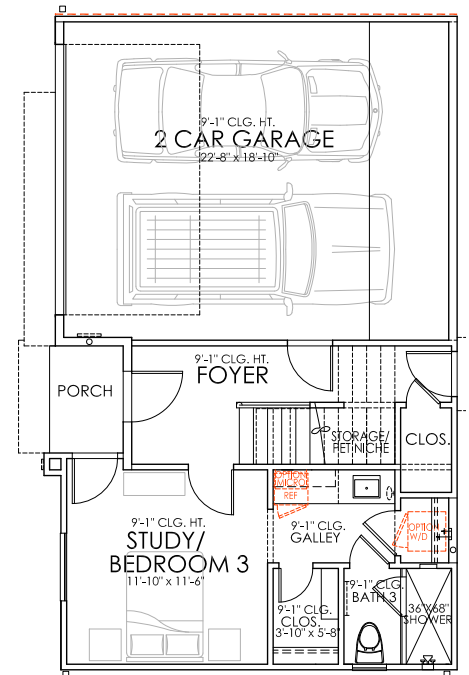
SQUARE FOOTAGES	
FIRST FLOOR:	370
SECOND FLOOR:	738
THIRD FLOOR:	836
CONDITIONED LIVING:	1944 S.F.
OUTDOOR LIVING:	119
TOTAL LIVING:	2063 S.F.



THIRD FLOOR

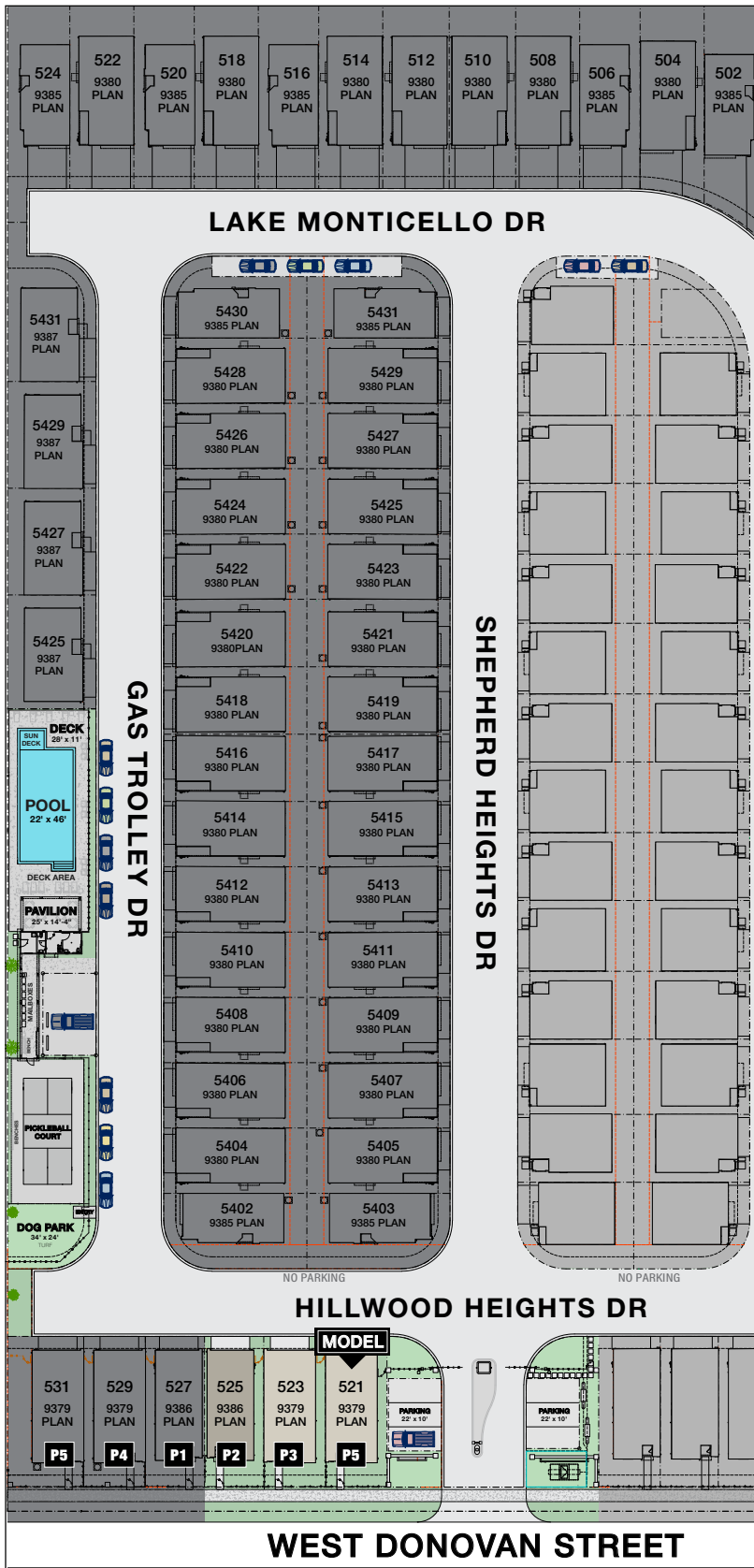


SECOND FLOOR



FIRST FLOOR

SQUARE FOOTAGES	
FIRST FLOOR:	426
SECOND FLOOR:	810
THIRD FLOOR:	881
CONDITIONED LIVING:	2117 S.F.
OUTDOOR LIVING:	98
TOTAL LIVING:	2215 S.F.



MODEL			
521 Hillwood Heights Dr P5			
MODEL			
3 Beds	3/1 Baths	2202 Sq. Ft.	9379 Plan
AVAILABLE MAY 2026			

PLAN 9379			
523 Hillwood Heights Dr P3			
\$462,240			
3 Beds	3/1 Baths	2202 Sq. Ft.	9379 Plan
AVAILABLE MAY 2026			

PLAN 9386			
525 Hillwood Heights Dr P2			
\$442,240			
3 Beds	3/1 Baths	1944 Sq. Ft.	9386 Plan
AVAILABLE MAY 2026			

PLAN 9386			
527 Hillwood Heights Dr			
TBA			
3 Beds	3/1 Baths	1944 Sq. Ft.	9386 Plan
TBA			

HOA (Short Term Rental Prohibited)
\$1,395 Annually for pool/pavillion/landscaping/dog park.
\$130 Monthly for water/trash/recycle.


CITYSIDE HOMES
 DISCOVER YOUR SPACE™

**FOR NEW HOME SALES
 CONTACT CITYSIDE HOMES!**

 **MICHAEL GUINN**
 New Home Representative
832-540-7209

DISCOVER YOUR SPACE™