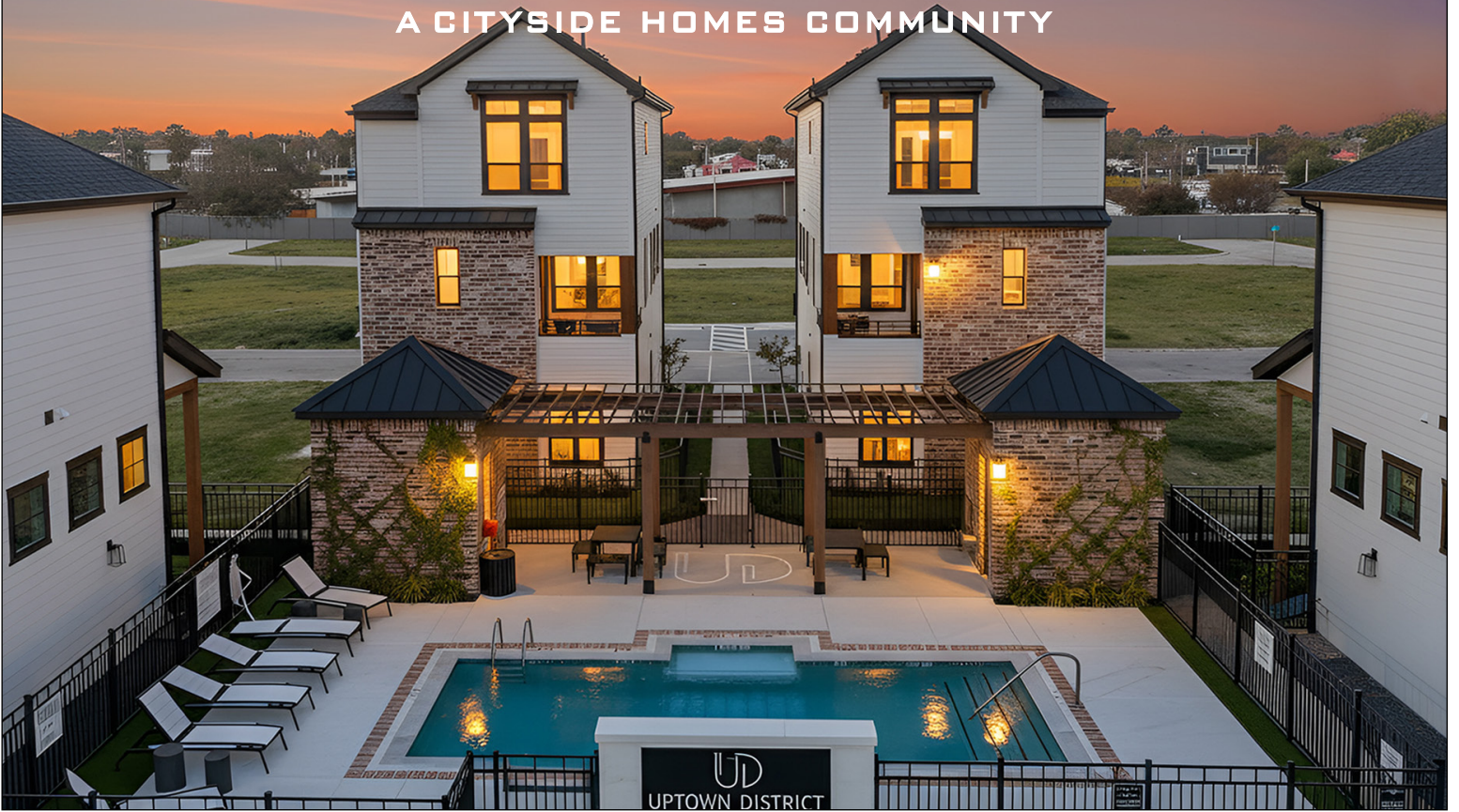


# UD UPTOWN DISTRICT

A CITYSIDE HOMES COMMUNITY



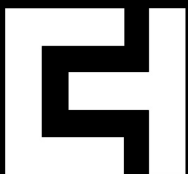
**\$359,990 - \$509,990**

PICKLEBALL COURT

COMMUNITY  
POOL AND PAVILION

COMMUNITY DOG PARK

**DISCOVER YOUR SPACE™**

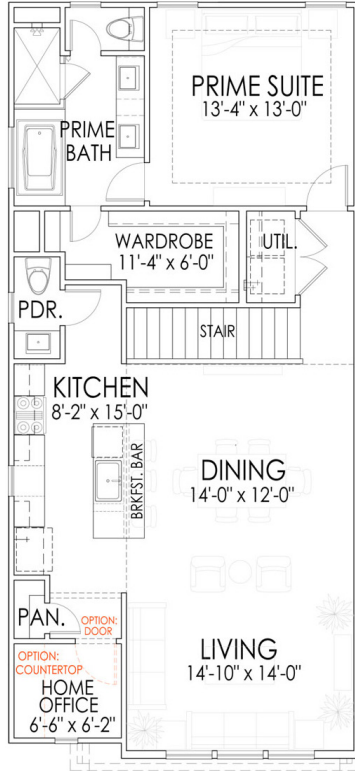


[WWW.CITYSIDEHOMES.COM](http://WWW.CITYSIDEHOMES.COM)

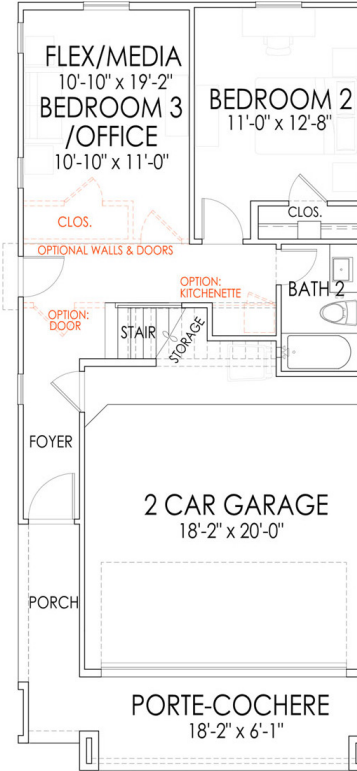
713-505-8805



**9283 PLAN | 1,688 SQ. FT.**



**SECOND FLOOR**

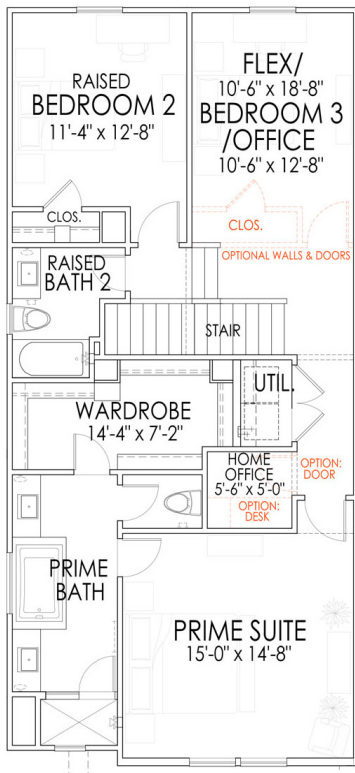


**FIRST FLOOR**

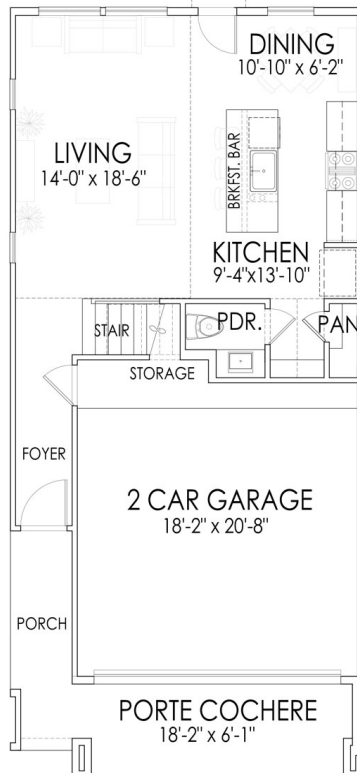
**SQUARE FOOTAGES**

FIRST FLOOR:	580
SECOND FLOOR:	1108
TOTAL LIVING:	1688 S.F.

**9284 PLAN | 1,698 SQ. FT.**



**SECOND FLOOR**

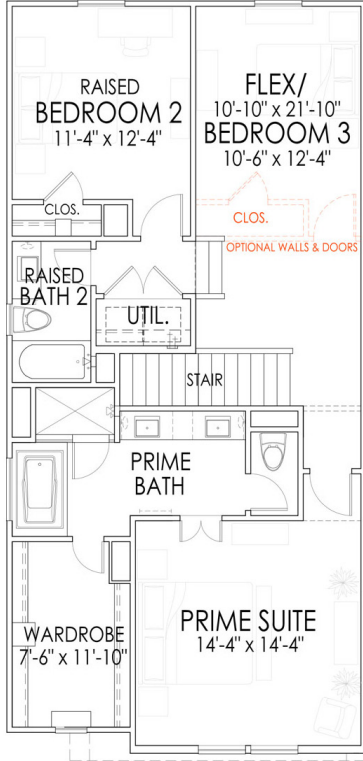


**FIRST FLOOR**

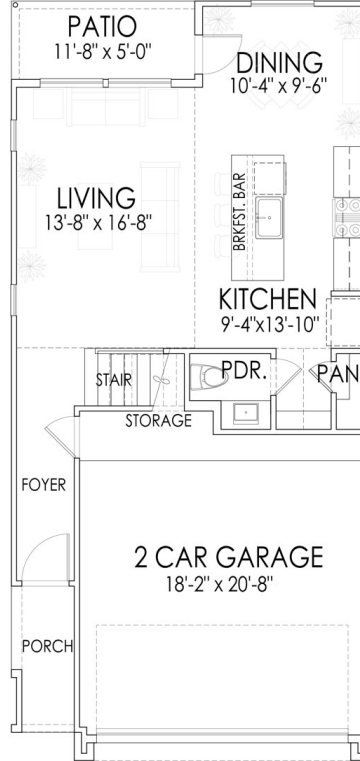
**SQUARE FOOTAGES**

FIRST FLOOR:	588
SECOND FLOOR:	1110
TOTAL LIVING:	1698 S.F.

**9294 PLAN | 1,684 SQ. FT.**



**SECOND FLOOR**

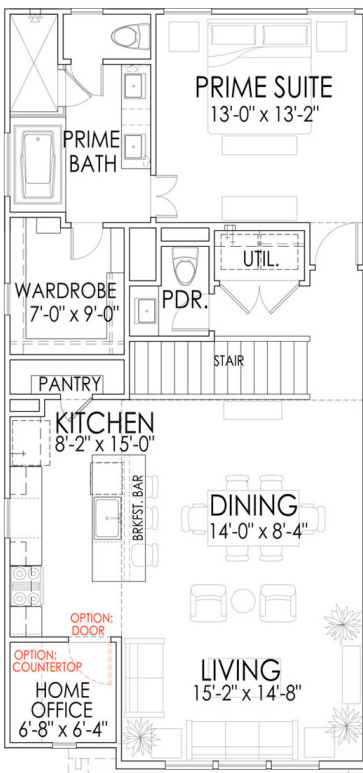


**FIRST FLOOR**

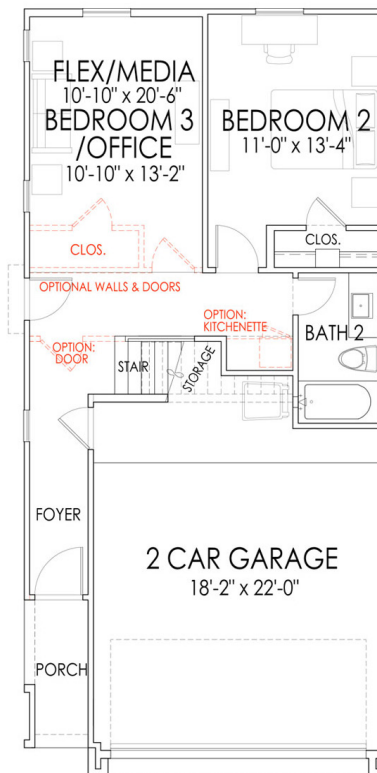
**SQUARE FOOTAGES**

FIRST FLOOR:	602
SECOND FLOOR:	1082
TOTAL LIVING:	1684 S.F.

**9295 PLAN | 1,702 SQ. FT.**



**SECOND FLOOR**

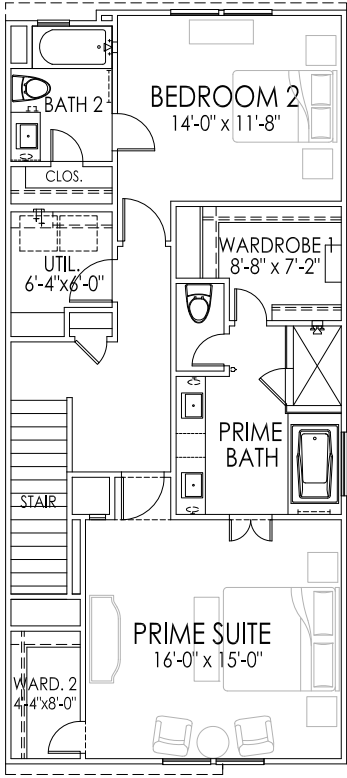


**FIRST FLOOR**

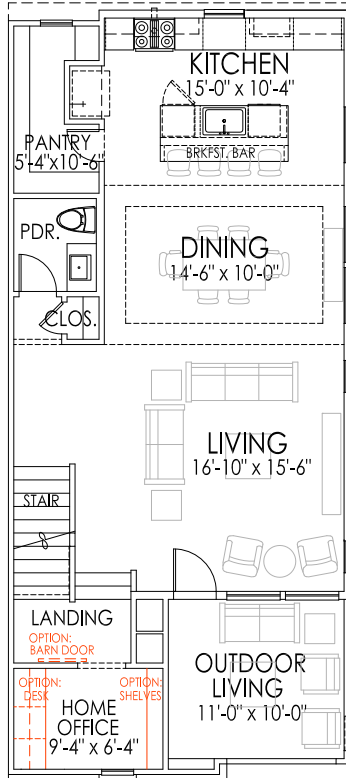
**SQUARE FOOTAGES**

FIRST FLOOR:	626
SECOND FLOOR:	1076
TOTAL LIVING:	1702 S.F.

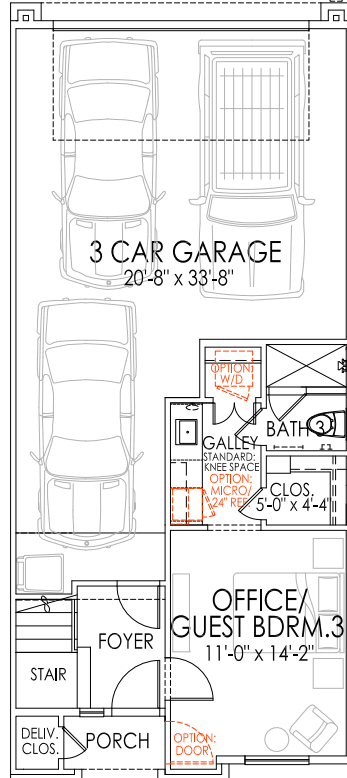
**9368 PLAN | 2,244 SQ. FT.**



**THIRD FLOOR**



**SECOND FLOOR**

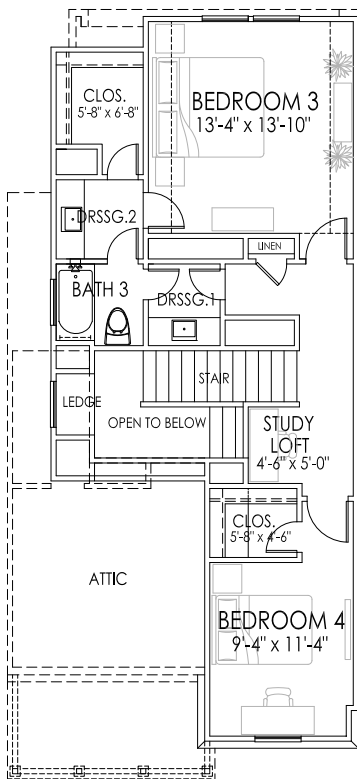


**FIRST FLOOR**

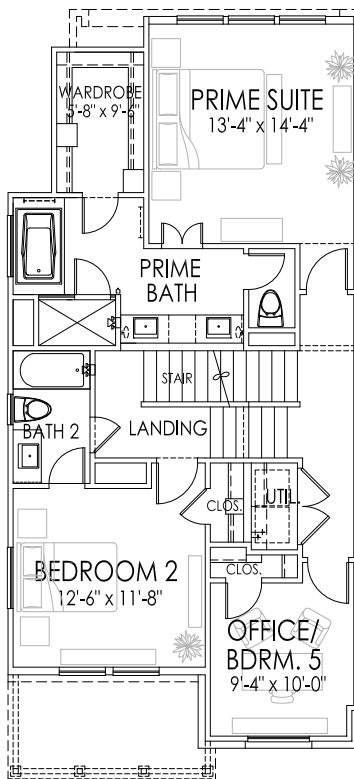
**SQUARE FOOTAGES**

FIRST FLOOR:	388
SECOND FLOOR:	900
THIRD FLOOR:	956
<b>TOTAL LIVING:</b>	<b>2244 S.F.</b>

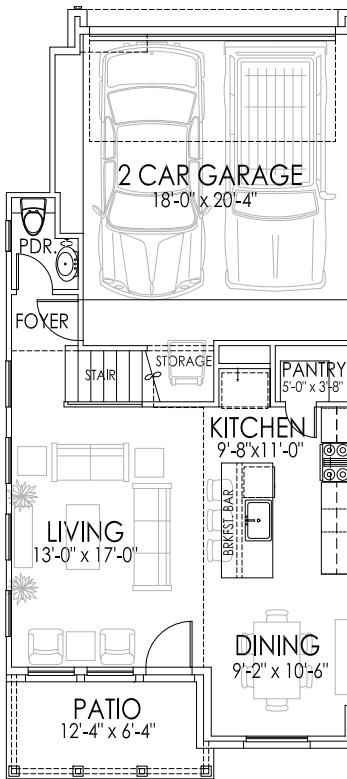
**9369 PLAN | 2,206 SQ. FT.**



**THIRD FLOOR**



**SECOND FLOOR**

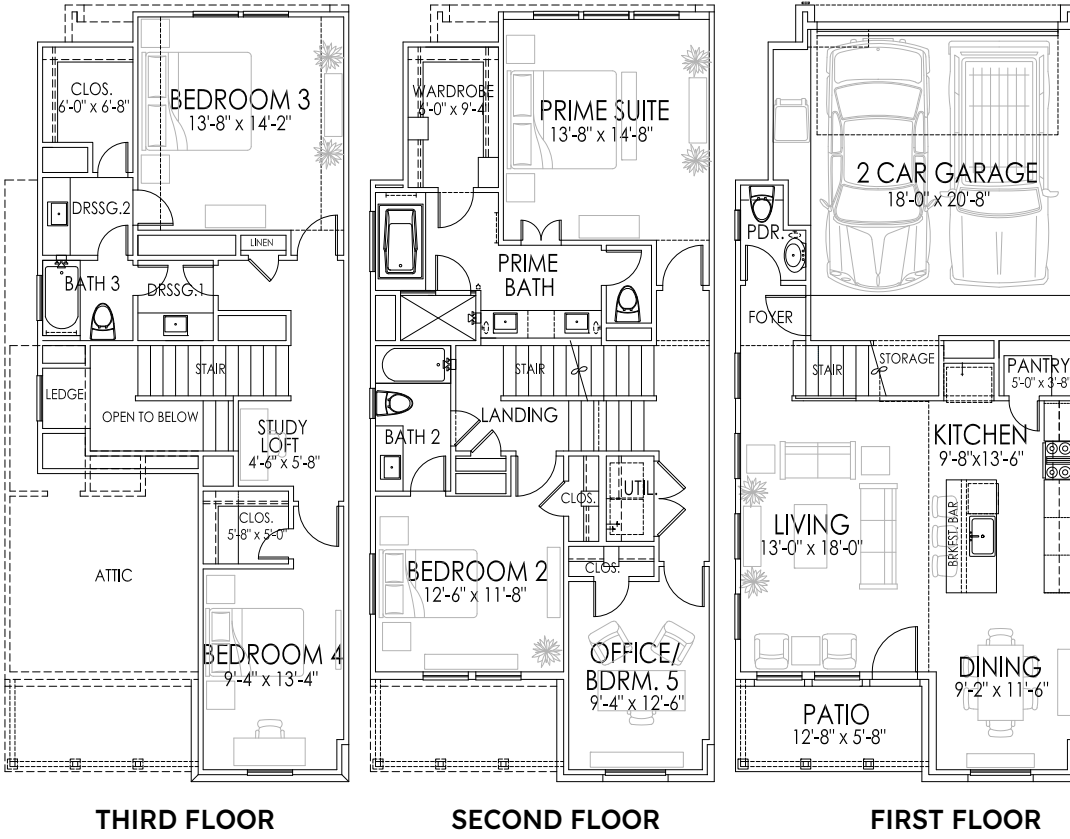


**FIRST FLOOR**

**SQUARE FOOTAGES**

FIRST FLOOR:	560
SECOND FLOOR:	986
THIRD FLOOR:	660
<b>TOTAL LIVING:</b>	<b>2206 S.F.</b>

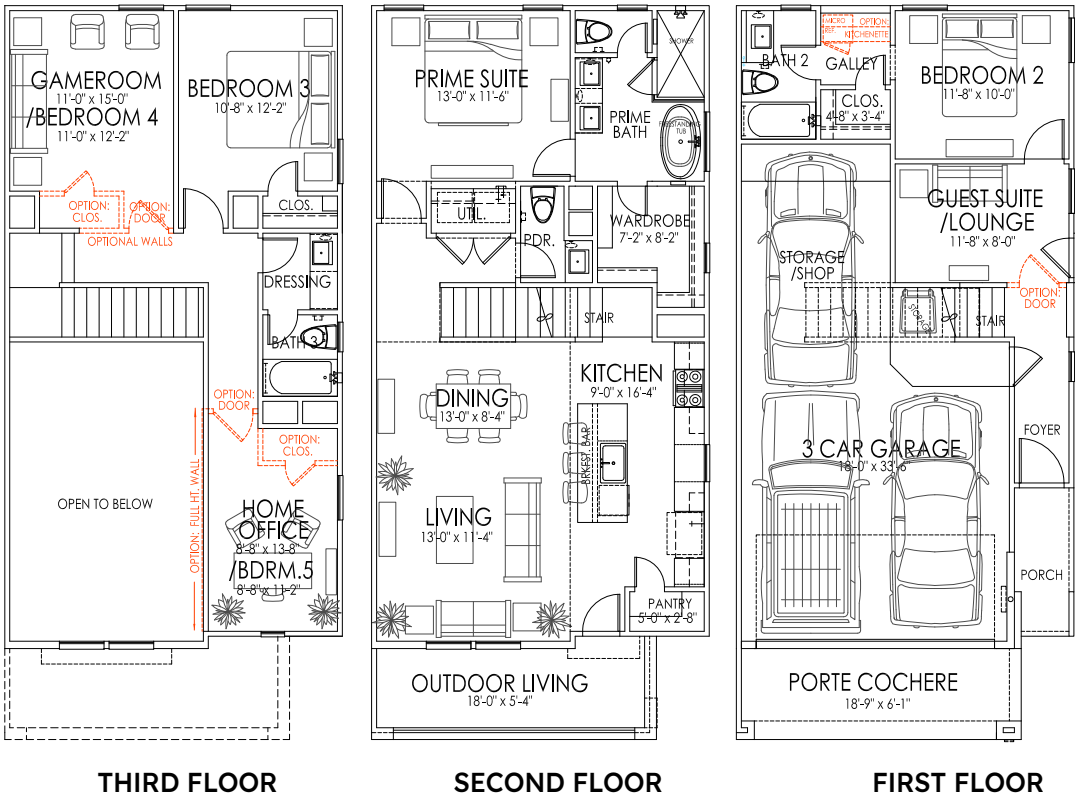
**9370 PLAN | 2,358 SQ. FT.**



**SQUARE FOOTAGES**

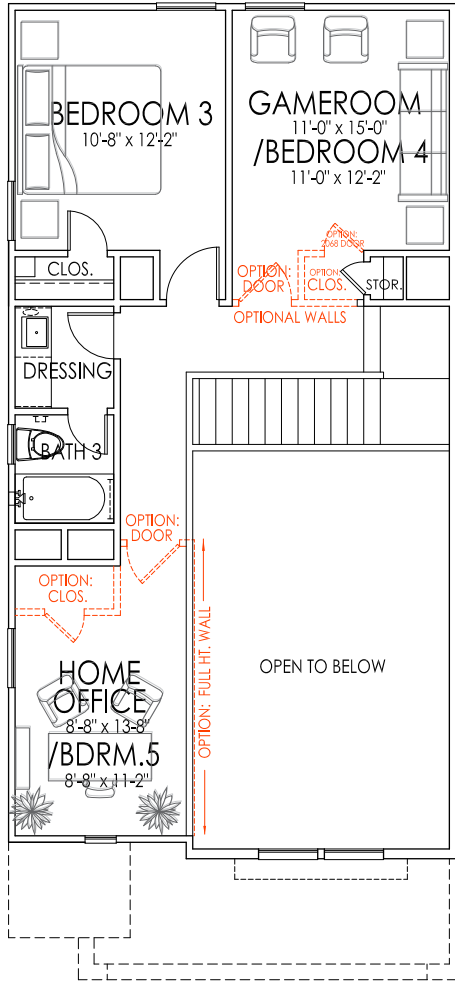
FIRST FLOOR:	620
SECOND FLOOR:	1042
THIRD FLOOR:	696
<b>TOTAL LIVING:</b>	<b>2358 S.F.</b>

**9371 PLAN | 2,064 SQ. FT.**

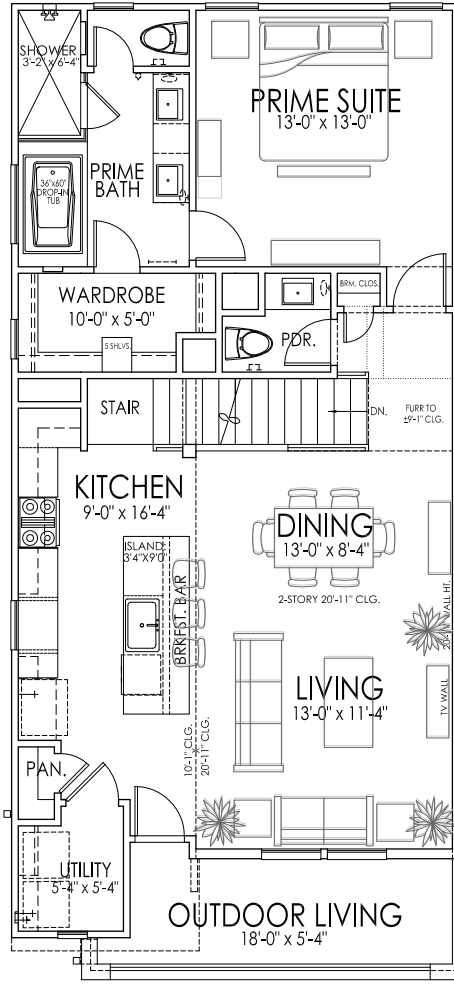


**SQUARE FOOTAGES**

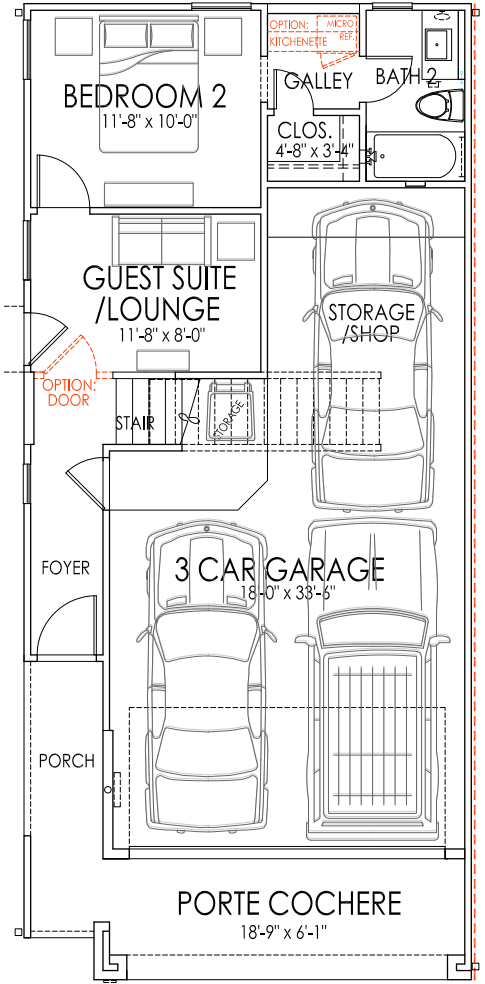
FIRST FLOOR:	419
SECOND FLOOR:	975
THIRD FLOOR:	670
<b>TOTAL LIVING:</b>	<b>2064 S.F.</b>



THIRD FLOOR



SECOND FLOOR



FIRST FLOOR

**SQUARE FOOTAGES**

FIRST FLOOR:	419
SECOND FLOOR:	975
THIRD FLOOR:	670
TOTAL LIVING:	2064 S.F.



FUTURE MODEL			
9216 Washington Heights <b>P12</b>			
<b>FUTURE MODEL</b>			
4-5 Beds	3/1 Baths	2358 Sq. Ft.	9370 Plan

AVAILABLE AUGUST 2026			
9211 Washington Heights <b>P12</b>			
\$401,390			
2-3 Beds	2/1 Baths	1702 Sq. Ft.	9295 Plan

AVAILABLE JUNE 2026			
9208 Fort George <b>P5</b>			
\$509,990			
4-5 Beds	3/1 Baths	2358 Sq. Ft.	9370 Plan

AVAILABLE OCTOBER 2026			
3505 Hamilton Heights <b>P10</b>			
\$491,390			
3-5 Beds	3/1 Baths	2064 Sq. Ft.	9372 Plan

MOVE IN READY <b>P1</b>			
9213 Washington Heights			
\$359,990 <b>NET PRICE HOME</b>			
2-3 Beds	2/1 Baths	1702 Sq. Ft.	9295 Plan

AVAILABLE SEPTEMBER 2026			
9209 Fort George <b>P11</b>			
\$499,990			
3 Beds	3/1 Baths	2244 Sq. Ft.	9368 Plan

AVAILABLE TBA			
3510 Hamilton Heights <b>P12</b>			
\$503,590			
4-5 Beds	3/1 Baths	2064 Sq. Ft.	9372 Plan

MOVE IN READY			
9217 Washington Heights <b>P12</b>			
\$399,990			
2-3 Beds	2/1 Baths	1702 Sq. Ft.	9295 Plan

AVAILABLE JUNE 2026			
9214 Fort George <b>P9</b>			
\$509,990			
4-5 Beds	3/1 Baths	2358 Sq. Ft.	9370 Plan

SOLD			
3512 Hamilton Heights <b>P8</b>			
<b>MODEL</b>			
3-5 Beds	3/1 Baths	2064 Sq. Ft.	9372 Plan

AVAILABLE SEPTEMBER 2026			
9207 Fort George <b>P12</b>			
\$508,165			
3 Beds	3/1 Baths	2244 Sq. Ft.	9368 Plan

HOA			
\$1,395 Annually for pool area, gate, landscaping and sprinkler system.			
\$125 Monthly for water/sewer/trash.			



POWERED BY:



FOR NEW HOME SALES CONTACT NEW AGE!

713-505-8805  
NEWAGETX.COM