

THE CORNER AT BUFFALO POINTE



ZERO OUT OF POCKET

ZERO DOWN*

HOUSTON'S BEST PRISM AWARDS G&BA 2023

THE GIGSUITE™
SPECIALTY ROOM OF THE YEAR



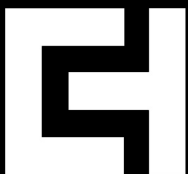
\$449,990 - \$482,565

**SPACIOUS OUTDOOR
LIVING SPACE**

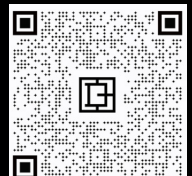
**AIRBNB READY AND
UBER PICK-UP AREAS**

**COMMUNITY
PARK AND POOL**

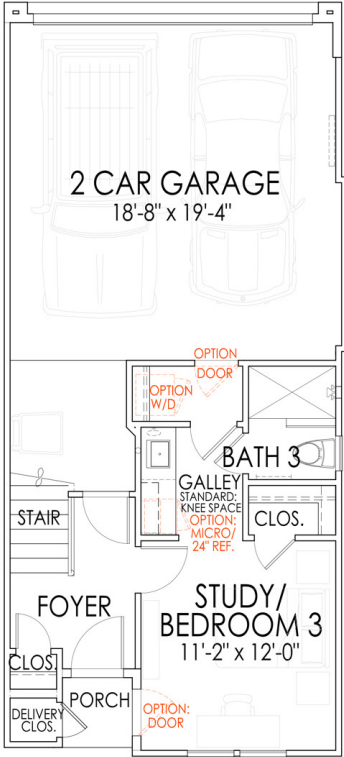
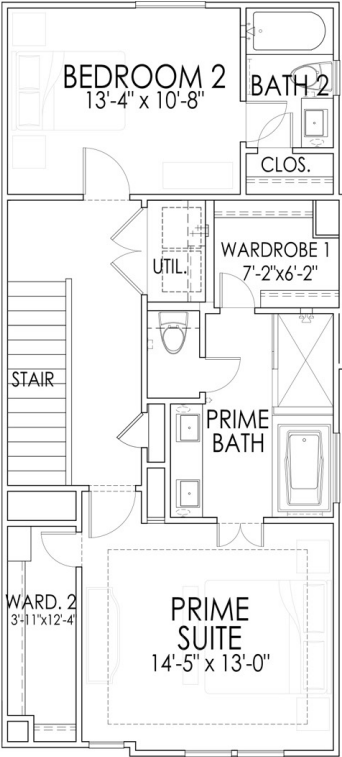
DISCOVER YOUR SPACE™



WWW.CITYSIDEHOMES.COM

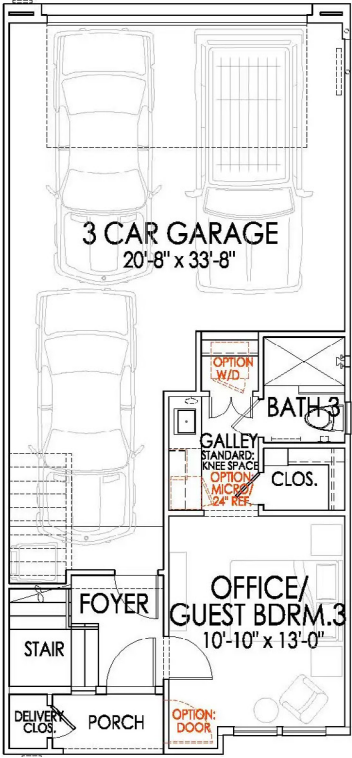
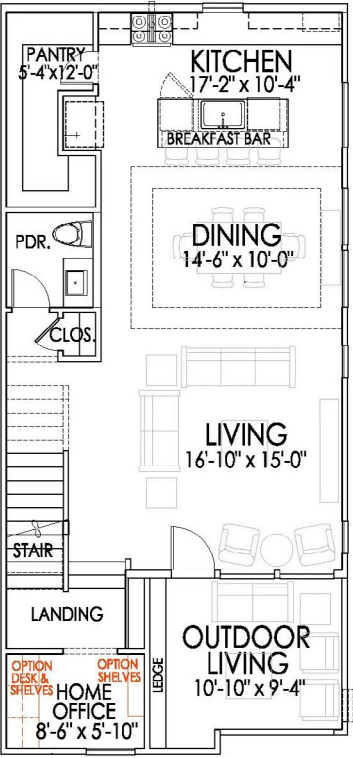
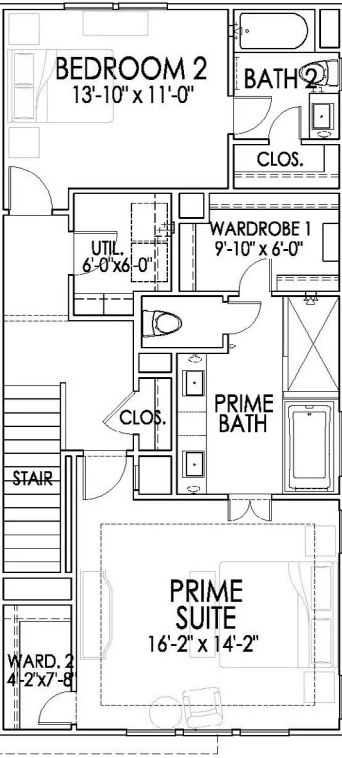


9301 PLAN | 1,914 SQ. FT.



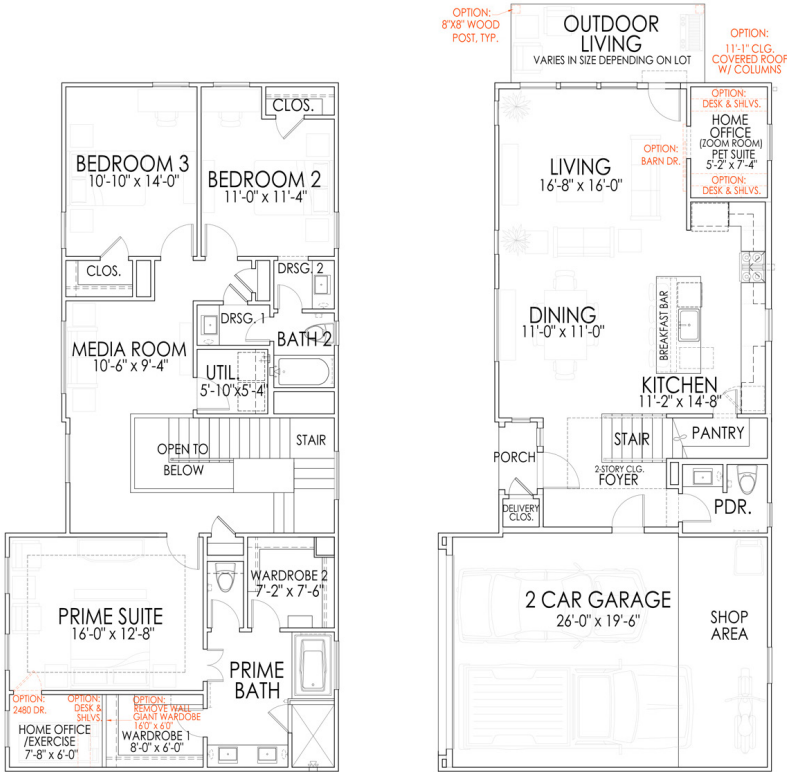
SQUARE FOOTAGES	
FIRST FLOOR:	355
SECOND FLOOR:	724
THIRD FLOOR:	835
TOTAL LIVING:	1914 S.F.

9302 PLAN | 2,177 SQ. FT.



SQUARE FOOTAGES	
FIRST FLOOR:	364
SECOND FLOOR:	853
THIRD FLOOR:	960
TOTAL LIVING:	2177 S.F.

9239 PLAN | 2,100 SQ. FT.

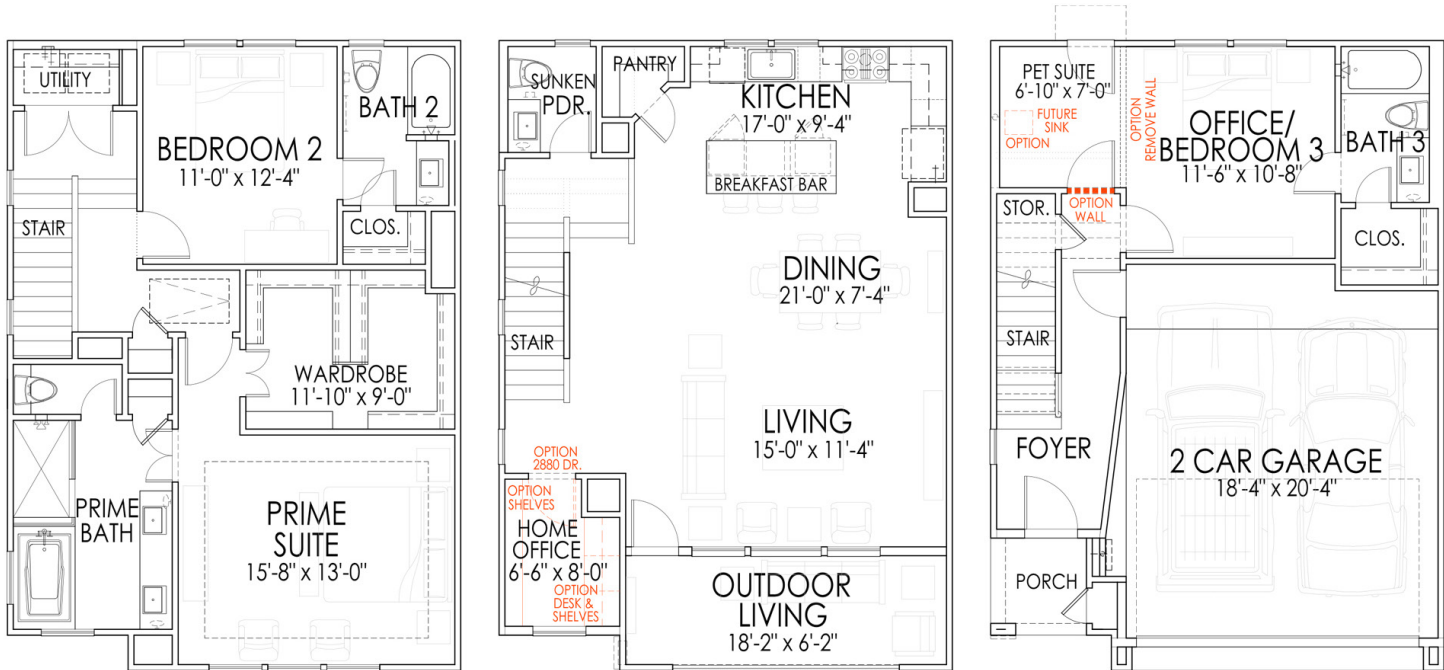


SECOND FLOOR

FIRST FLOOR

SQUARE FOOTAGES	
FIRST FLOOR:	814
SECOND FLOOR:	1286
TOTAL LIVING:	2100 S.F.

9335 PLAN | 2,106 SQ. FT.

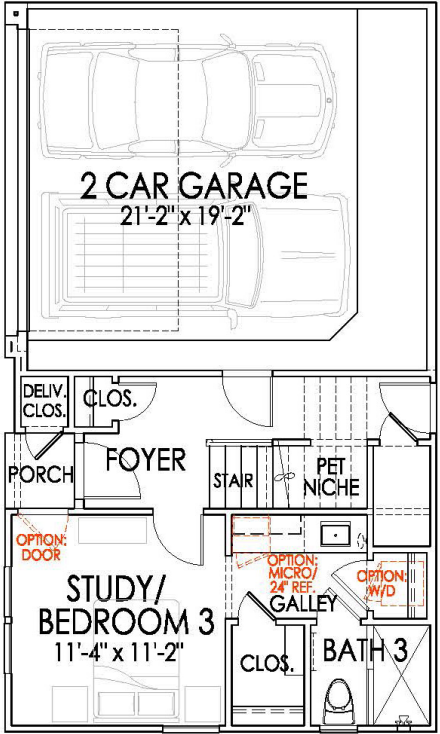
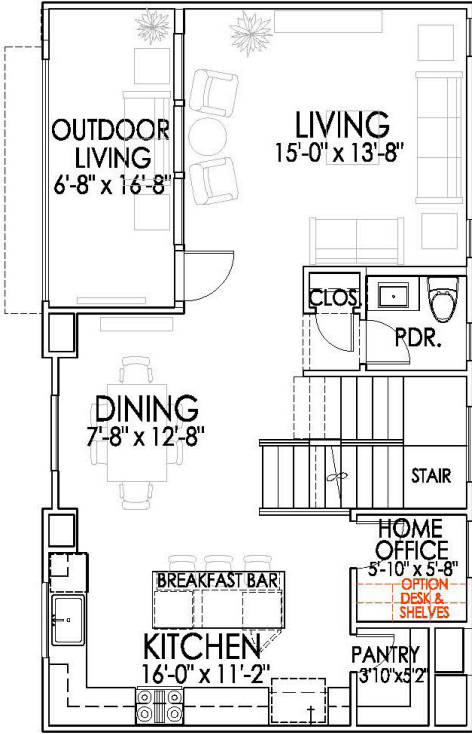


THIRD FLOOR

SECOND FLOOR

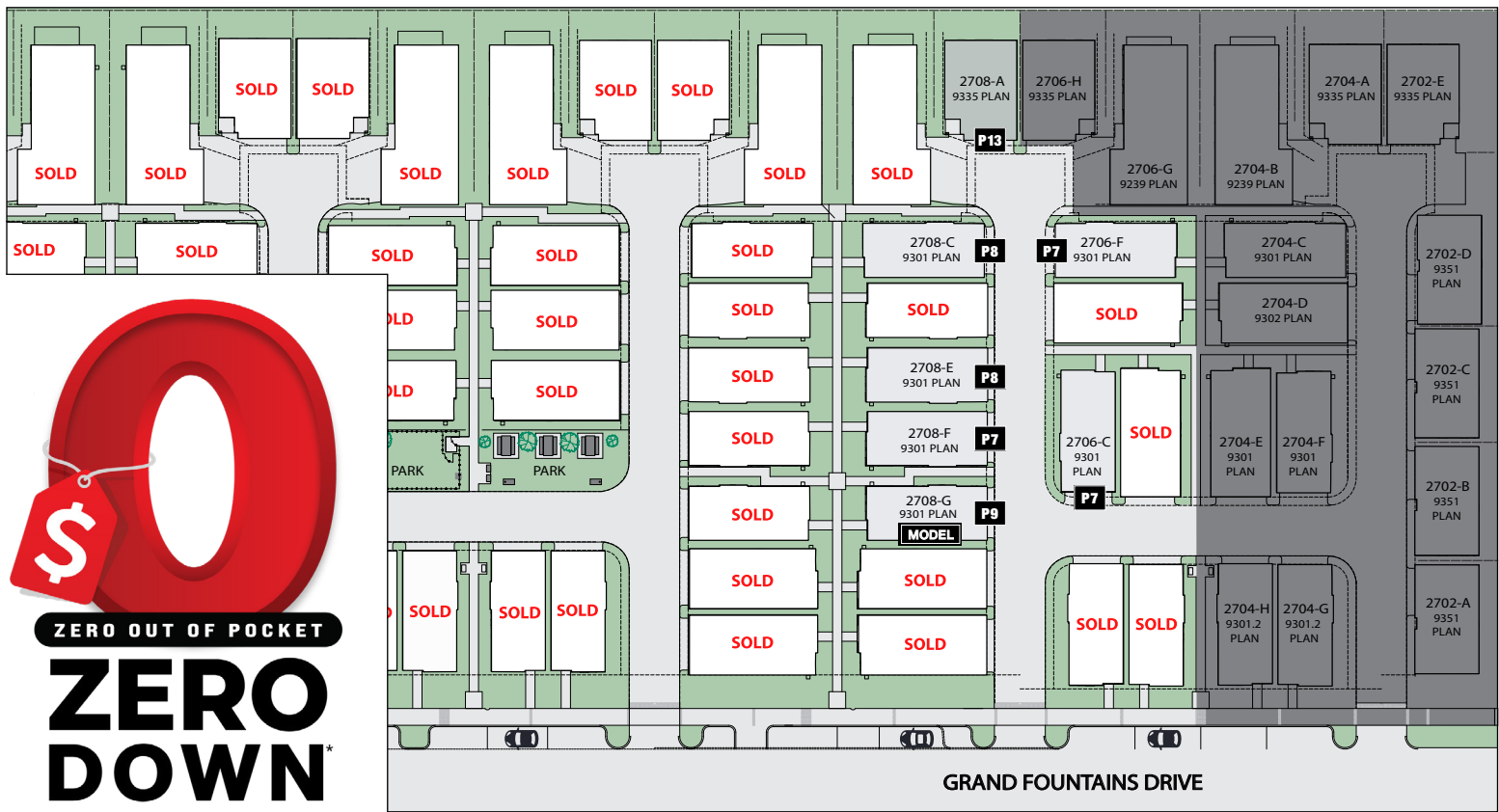
FIRST FLOOR

SQUARE FOOTAGES	
FIRST FLOOR:	446
SECOND FLOOR:	780
THIRD FLOOR:	880
TOTAL LIVING:	2106 S.F.



SQUARE FOOTAGES

FIRST FLOOR:	407
SECOND FLOOR:	766
THIRD FLOOR:	877
TOTAL LIVING:	2050 S.F.



SOLD P8			
2706-B Grand Fountains Drive			
SOLD			
3 Beds	3/1 Baths	1,914 Sq. Ft.	9301 Plan

MOVE IN READY P8			
2708-C Grand Fountains Drive			
\$462,490			
3 Beds	3/1 Baths	1,914 Sq. Ft.	9301 Plan

MODEL P9			
2708-G Grand Fountains Drive			
MODEL			
3 Beds	3/1 Baths	1,914 Sq. Ft.	9301 Plan

MOVE IN READY P7			
2706-C Grand Fountains Drive			
\$464,990			
3 Beds	3/1 Baths	1,914 Sq. Ft.	9301 Plan

SOLD P9			
2708-D Grand Fountains Drive			
SOLD			
3 Beds	3/1 Baths	1,914 Sq. Ft.	9301 Plan

SOLD P8			
2708-H Grand Fountains Drive			
SOLD			
3 Beds	3/1 Baths	2,177 Sq. Ft.	9302 Plan

MOVE IN READY P7			
2706-F Grand Fountains Drive			
\$459,990			
3 Beds	3/1 Baths	1,914 Sq. Ft.	9301 Plan

MOVE IN READY P8			
2708-E Grand Fountains Drive			
\$459,990			
3 Beds	3/1 Baths	1,914 Sq. Ft.	9301 Plan

SOLD P9			
2710-G Grand Fountains Drive			
SOLD			
3 Beds	3/1 Baths	1,914 Sq. Ft.	9301 Plan

MOVE IN READY P13			
2708-A Grand Fountains Drive			
\$482,565			
3 Beds	3/1 Baths	2,106 Sq. Ft.	9335 Plan

MOVE IN READY P9			
2708-F Grand Fountains Drive			
\$449,990			
3 Beds	3/1 Baths	1,914 Sq. Ft.	9301 Plan

HOA			
\$1,495 Annually for pool area, dog parks, gates, landscaping and sprinkler system.			
\$110 Monthly for water/sewer/trash.			

FOR NEW HOME SALES CONTACT NEW AGE!



Scan to
schedule
a tour

NEW  AGE

713-505-8805
NEWAGETX.COM