



SHEPHERD HEIGHTS

A CITYSIDE HOMES COMMUNITY



\$439,990 - \$466,490

PICKLEBALL COURT

COMMUNITY
POOL AND PAVILION

COMMUNITY DOG PARK

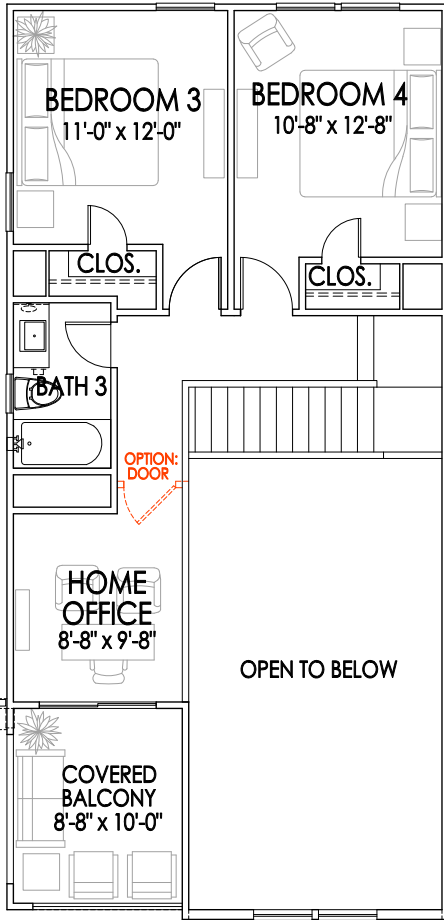
DISCOVER YOUR SPACE™



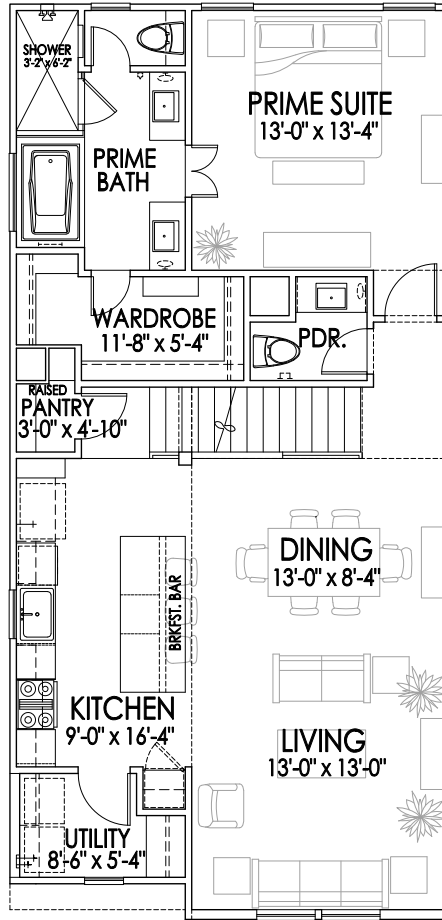
WWW.CITYSIDEHOMES.COM

832-540-7209

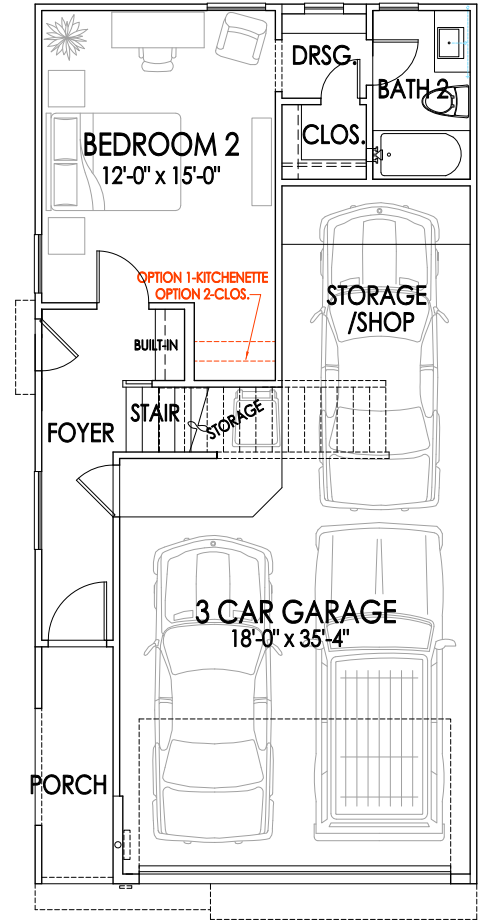




THIRD FLOOR

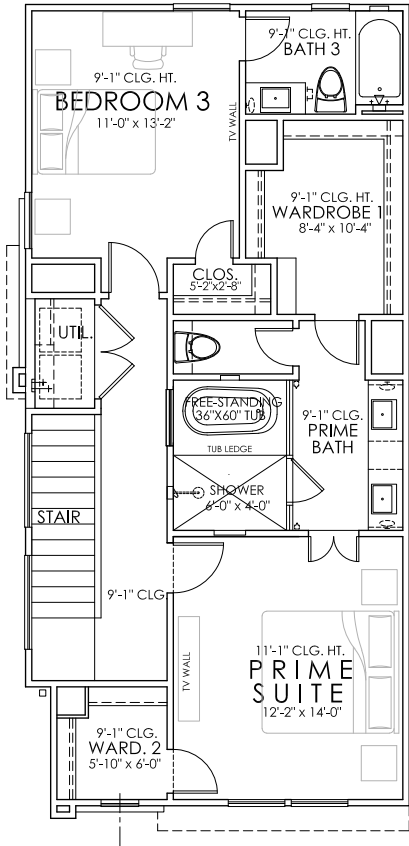


SECOND FLOOR

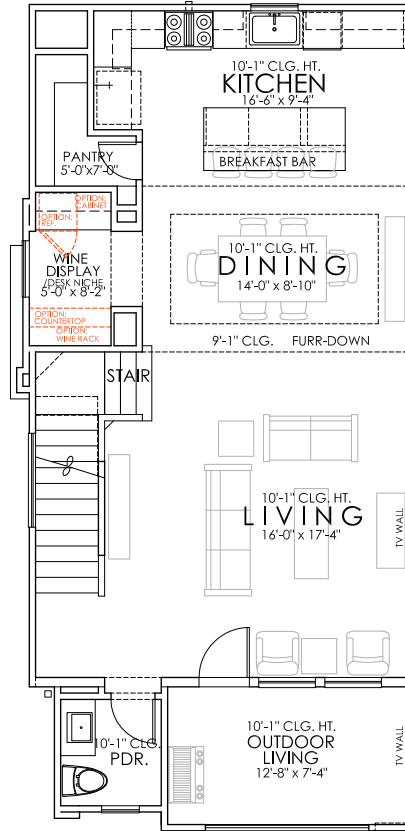


FIRST FLOOR

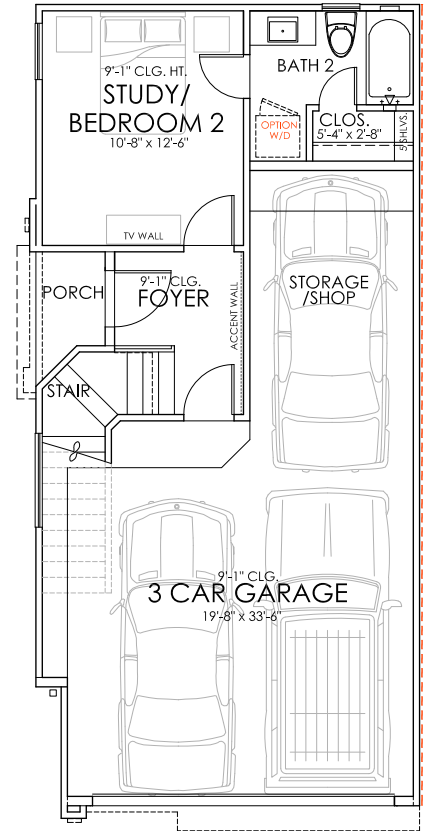
SQUARE FOOTAGES	
FIRST FLOOR:	424
SECOND FLOOR:	1048
THIRD FLOOR:	628
CONDITIONED LIVING:	2100 S.F.
OUTDOOR LIVING:	96
TOTAL LIVING:	2196 S.F.



THIRD FLOOR

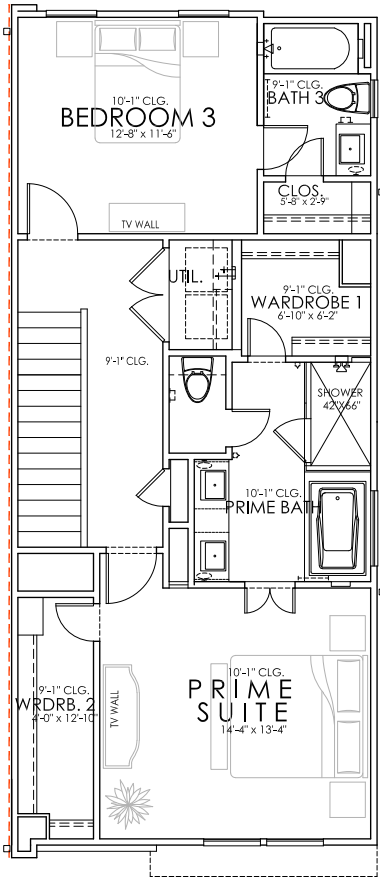


SECOND FLOOR

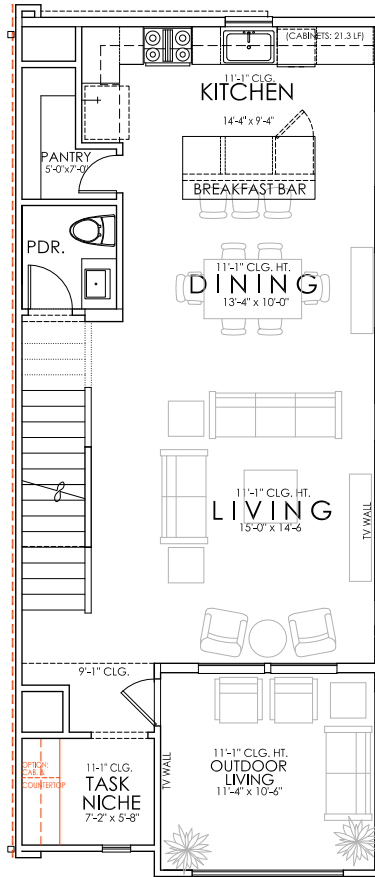


FIRST FLOOR

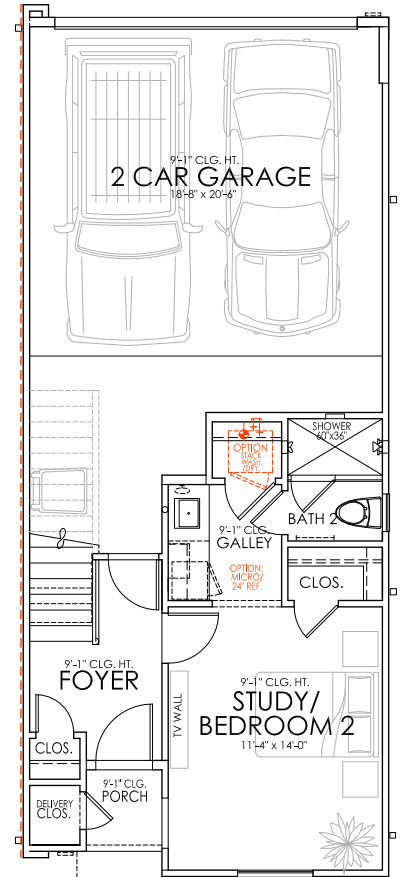
SQUARE FOOTAGES	
FIRST FLOOR:	310
SECOND FLOOR:	779
THIRD FLOOR:	829
CONDITIONED LIVING:	1918 S.F.
OUTDOOR LIVING:	100
TOTAL LIVING:	2018 S.F.



THIRD FLOOR

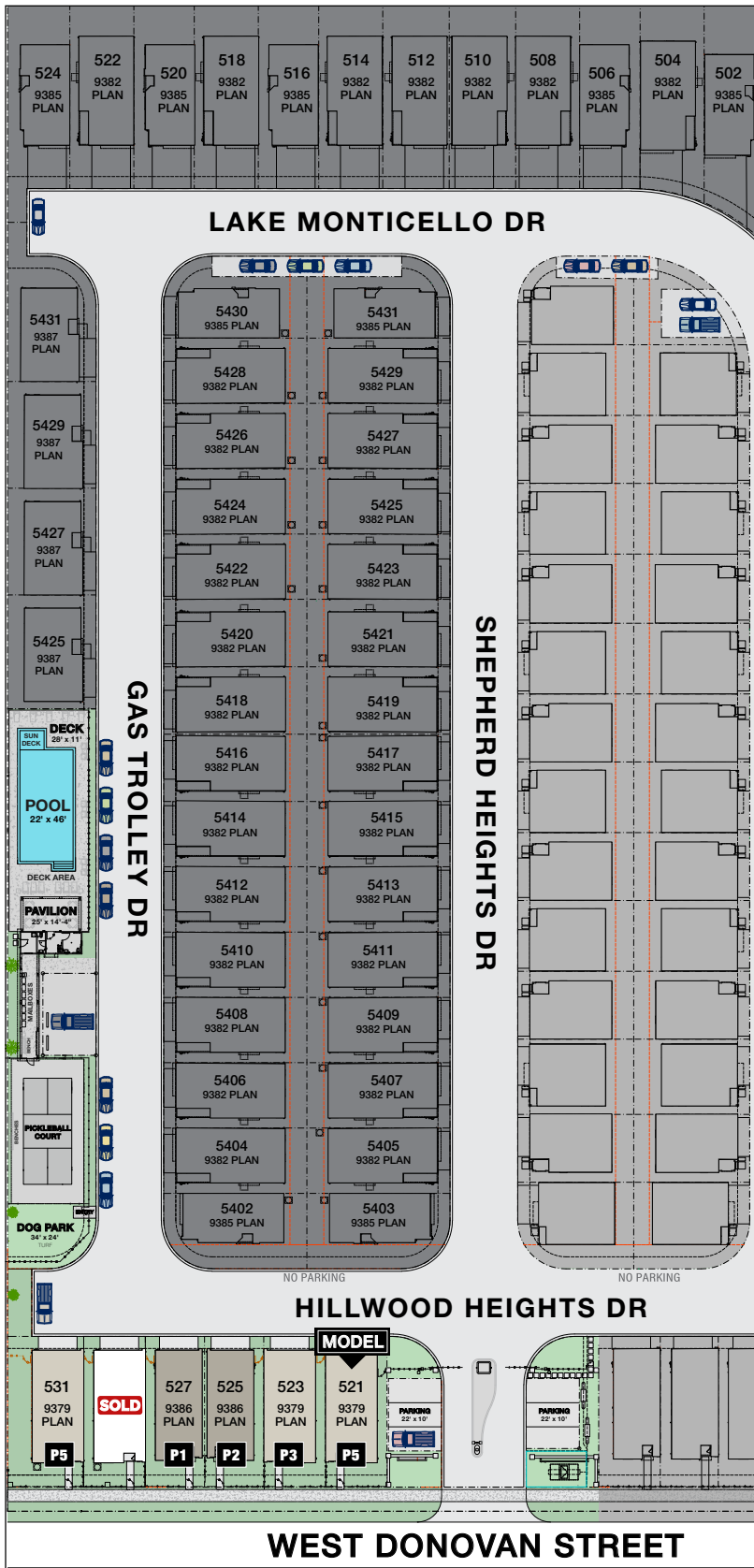


SECOND FLOOR



FIRST FLOOR

SQUARE FOOTAGES	
FIRST FLOOR:	370
SECOND FLOOR:	738
THIRD FLOOR:	836
CONDITIONED LIVING:	1944 S.F.
OUTDOOR LIVING:	119
TOTAL LIVING:	2063 S.F.



MODEL			
521 Hillwood Heights Dr P5			
MODEL			
3 Beds	3/1 Baths	2202 Sq. Ft.	9379 Plan
AVAILABLE JUNE 2026			

PLAN 9379			
523 Hillwood Heights Dr P3			
\$462,240			
3 Beds	3/1 Baths	2202 Sq. Ft.	9379 Plan
MOVE IN READY			

PLAN 9386			
525 Hillwood Heights Dr P2			
\$442,240			
3 Beds	3/1 Baths	1944 Sq. Ft.	9386 Plan
MOVE IN READY			

PLAN 9386			
527 Hillwood Heights Dr P1			
\$439,990			
3 Beds	3/1 Baths	1944 Sq. Ft.	9386 Plan
AVAILABLE JULY 2026			

SOLD			
529 Hillwood Heights Dr P4			
SOLD			
3 Beds	3/1 Baths	2202 Sq. Ft.	9379 Plan
AVAILABLE JULY 2026			

PLAN 9379			
531 Hillwood Heights Dr P5			
\$466,490			
3 Beds	3/1 Baths	2202 Sq. Ft.	9379 Plan
AVAILABLE AUGUST 2026			

HOA (Short Term Rental Prohibited)
 \$1,395 Annually for pool/pavilion/landscaping/dog park.
 \$130 Monthly for water/trash/recycle.

CITYSIDE HOMES
 DISCOVER YOUR SPACE™
**FOR NEW HOME SALES
 CONTACT CITYSIDE HOMES!**

MICHAEL GUINN
 New Home Representative
832-540-7209

DISCOVER YOUR SPACE™