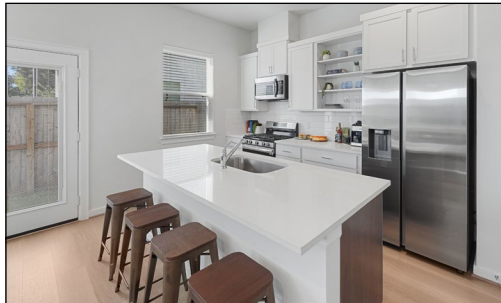


# EP | ERIN PARK

4.25%

MOVE-IN READY\*



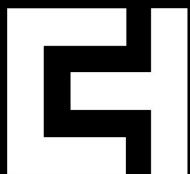
\$329,990 - \$389,990

2" FAUX WOOD BLINDS

COMMUNITY DOG PARK

SAMSUNG APPLIANCES

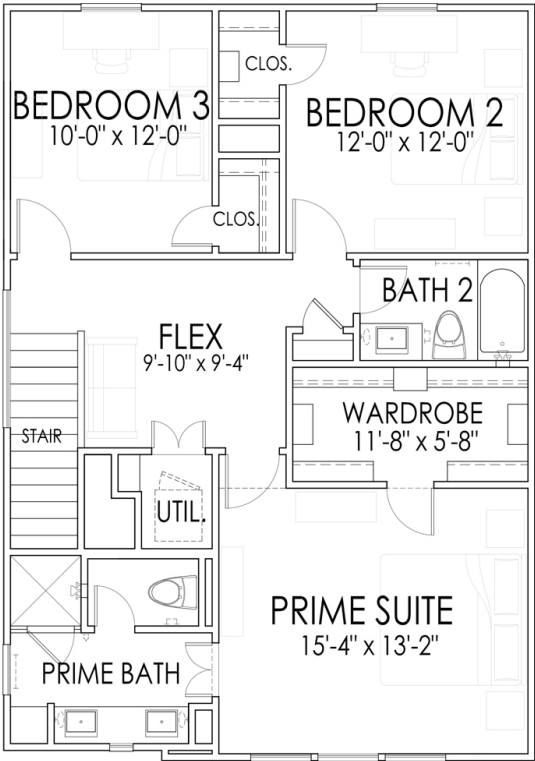
DISCOVER YOUR SPACE™



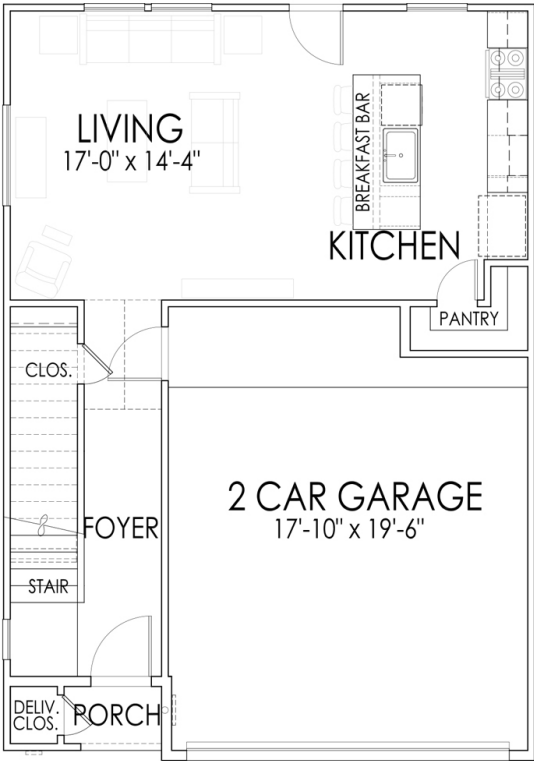
[WWW.CITYSIDEHOMES.COM](http://WWW.CITYSIDEHOMES.COM)



9215 PLAN | 1,496 SQ. FT.



SECOND FLOOR

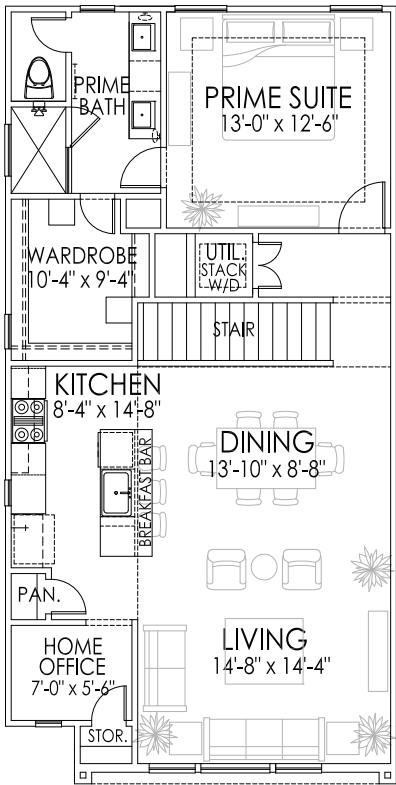


FIRST FLOOR

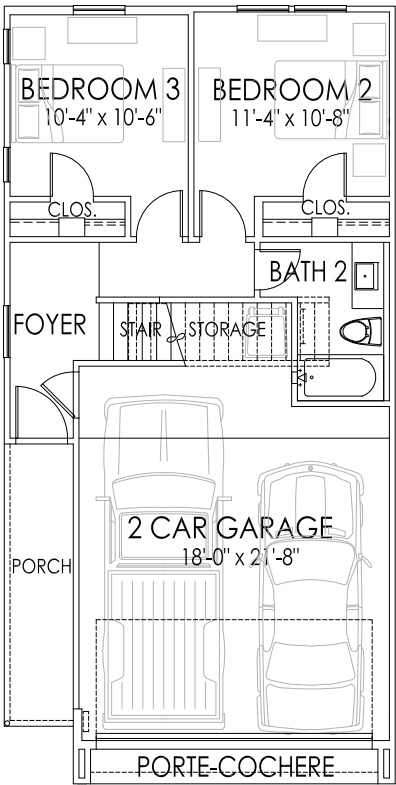
SQUARE FOOTAGES

FIRST FLOOR:	562
SECOND FLOOR:	934
TOTAL LIVING:	1496 S.F.

9275 PLAN | 1,468 SQ. FT.



SECOND FLOOR

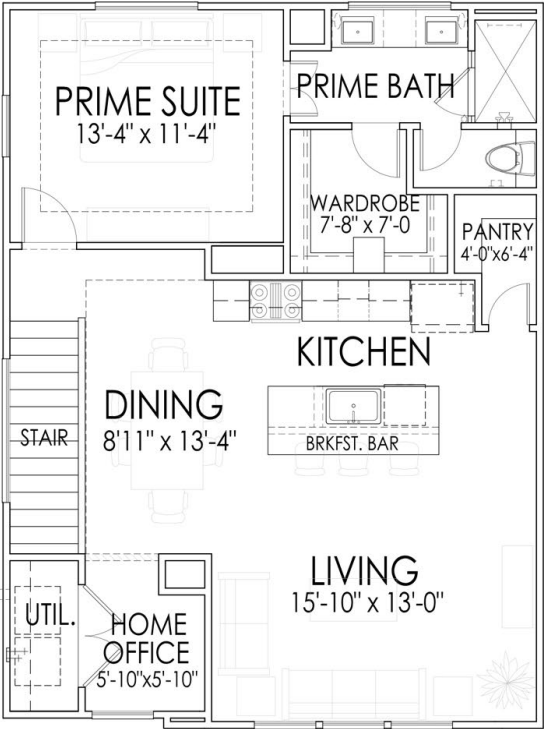


FIRST FLOOR

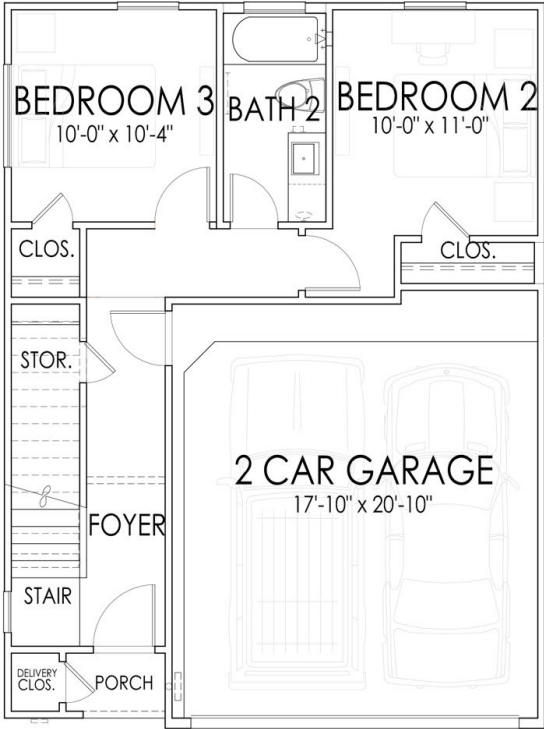
SQUARE FOOTAGES

FIRST FLOOR:	490
SECOND FLOOR:	978
TOTAL LIVING:	1468 S.F.

9289 PLAN | 1,396 SQ. FT.



SECOND FLOOR

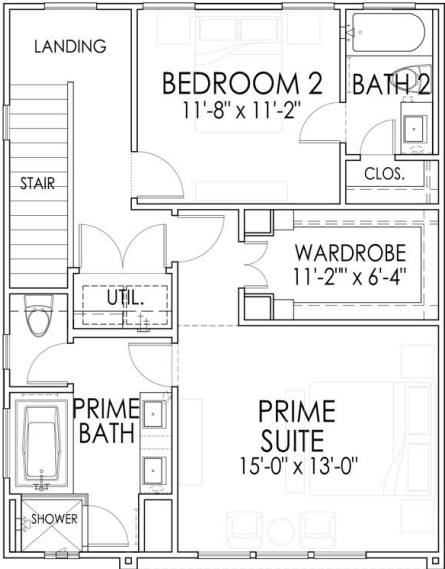


FIRST FLOOR

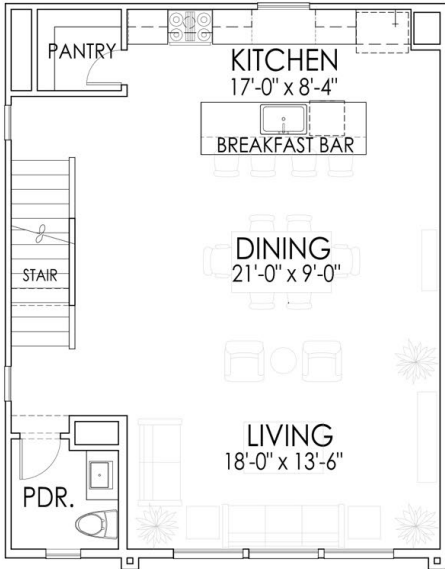
SQUARE FOOTAGES

FIRST FLOOR:	526
SECOND FLOOR:	870
TOTAL LIVING:	1396 S.F.

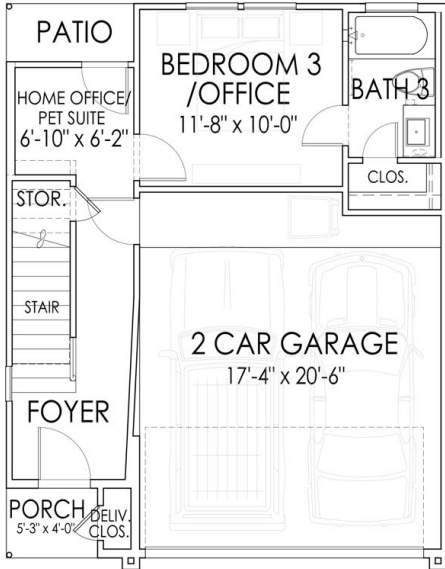
9366 PLAN | 1,978 SQ. FT.



THIRD FLOOR



SECOND FLOOR

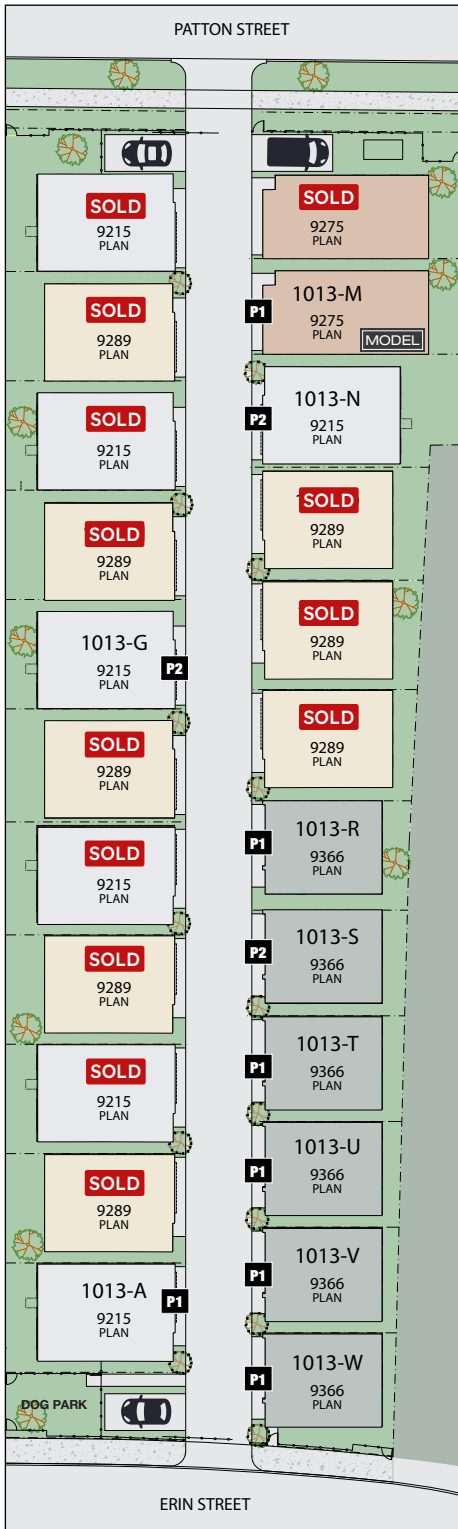


FIRST FLOOR

SQUARE FOOTAGES

FIRST FLOOR:	386
SECOND FLOOR:	806
THIRD FLOOR:	786
TOTAL LIVING:	1978 S.F.





# ERIN PARK

A CITYSIDE HOMES COMMUNITY

9215 PLAN **P1**

1013-A Erin Street  
\$349,990

3 Beds	2 Baths	1496 Sq. Ft.
-----------	------------	-----------------

**MOVE IN READY**

9215 PLAN **P2**

1013-G Erin Street  
\$329,990

3 Beds	2 Baths	1496 Sq. Ft.
-----------	------------	-----------------

**MOVE IN READY**

9275 PLAN **P1**

1013-M Erin Street  
**MODEL**

3 Beds	2 Baths	1468 Sq. Ft.
-----------	------------	-----------------

**MODEL**

9215 PLAN **P2**

1013-N Erin Street  
\$349,990

3 Beds	2 Baths	1496 Sq. Ft.
-----------	------------	-----------------

**MOVE IN READY**

**SOLD** **P2**

1013-Q Erin Street  
**SOLD**

3 Beds	2 Baths	1396 Sq. Ft.
-----------	------------	-----------------

**MOVE IN READY**

9366 PLAN **P1**

1013-R Erin Street  
\$359,990

3 Beds	3/1 Baths	1978 Sq. Ft.
-----------	--------------	-----------------

**MOVE IN READY**

9366 PLAN **P2**

1013-S Erin Street  
\$389,990

3 Beds	3/1 Baths	1978 Sq. Ft.
-----------	--------------	-----------------

**MOVE IN READY**

9366 PLAN **P1**

1013-T Erin Street  
\$389,990

3 Beds	3/1 Baths	1978 Sq. Ft.
-----------	--------------	-----------------

**AVAILABLE APRIL 2025**

9366 PLAN

1013-U Erin Street  
\$389,990

3 Beds	3/1 Baths	1978 Sq. Ft.
-----------	--------------	-----------------

**AVAILABLE JULY 2025**

9366 PLAN

1013-V Erin Street  
\$389,990

3 Beds	3/1 Baths	1978 Sq. Ft.
-----------	--------------	-----------------

**AVAILABLE JULY 2025**

9366 PLAN

1013-W Erin Street  
\$389,990

3 Beds	3/1 Baths	1978 Sq. Ft.
-----------	--------------	-----------------

**AVAILABLE AUGUST 2025**

## HOA

\$1,195 Annually for landscaping, sprinklers, gates, and dog park.

\$110 Monthly for water, sewer, trash, and recycling.

**FOR NEW HOME SALES CONTACT SO HOU REALTY GROUP!**



**832-280-5455**  
**SOHOUREALTY.COM**

"Explore your perfect dream home here in Houston!"